



Rail Testing and Training

Situated less than 20 miles north of Derby, WyvernRail's MyTestTrack.com facilities in Wirksworth have emerged in just four years to be one of the most cost-effective and flexible testing sites for rail vehicles in the UK.

As recently as 2003, the branch line to Wirksworth was an overgrown stub leading from Duffield on the Midland Main Line. But even then, volunteers restoring the railway as a community railway discovered that the line's close proximity to Derby, combined with an extensive yard at Wirksworth, virtually unparalleled privacy and good communications (from roads to broadband) meant that the line soon became a source of interest to engineering companies looking for a location to test and demonstrate equipment.

Whether you are testing an idea, a prototype, or a production model, we can offer you a test site to suit your needs.

Major Projects

Thanks to MyTestTrack.com's close links with industry, the site has become the prime location for two major testing programmes:

In 2006, Tube Lines announced that Wirksworth had been selected as a test site for Engineers Trains being equipped with the Transmission Based Train Control (TBTC) system. TBTC is designed and manufactured by Thales under contract to Tube Lines to reduce headways on the deep level lines in London and enable more trains to run, more quickly and at shorter intervals. MyTestTrack.com is working in conjunction with Halcrow, Thales, TransPlant and LH Group Services.



In December 2006, the Rail Standards & Safety Board (RSSB) designated Wirksworth as the prime, and presently only, location for Prevention of Derailment assessment for possession-only rail vehicles (yellow machines) to RIS-1530-PLT. This new standard, issued in October 2006, applies to all possession-only vehicles used on Network Rail infrastructure and includes road/rail vehicles, trailers, rail-mounted maintenance machines and attachments. All new vehicles must be type-approved to this new standard, as must all vehicles over seven years old.

MyTestTrack.com's test site at Wirksworth has become the industry standard location for testing of this nature because of the considerable variety of rail conditions offered in one location. The station yard has a complex layout with a variety of rail types and crossings, while the line north of the yard incorporates an incline of 1:27 which was used by the RAIB for investigations into a number of incidents.



Variety

Although Yellow Machines have played a significant part in MyTestTrack.com's business since its inception, the site handles a variety of vehicles up to and including locomotives.

Amongst the many challenges presented to us was the shakedown testing during 2004 and 2005 of the Defence Logistics Organisation's fleet of Vanguard and Steelman locomotives following their refurbishment by the LH Group. In 2006 we replicated an "in factory" journey over a period of two weeks where the customer wished to observe the behaviour of new seals on the liquid content of a container. End-stop testing has been undertaken for Oleo Pneumatics and Balfour Beatty, involving great skills from our train crews to judge distance and speed. We have twice entertained a rail grinder for the purpose of training new crews in its use on Britain's light rail systems.

Our testing, training and trials work has brought people from around the world to Derbyshire; all of whom have been fulsome in their praise of our style and professional approach to the business.



Wirksworth has hosted several vehicles from Sperry Rail's fleet; ranging from hand-propelled instruments to loco hauled units, for markets around the world, while Thermit Welding has demonstrated various tools and techniques to international audiences, using the site's wide variety of conditions and welcoming hospitality facilities.

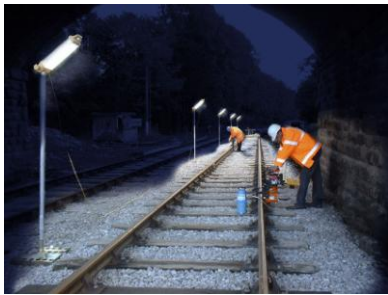


Several prototype and trials vehicles have been tested at MyTestTrack.com's facilities and these have included a range of people-movers, Unimog-based vehicles and even a Segway personal transporter, converted to run on standard gauge track. Meanwhile, a variety of industrial locomotives have performed shakedown and acceptance testing at Wirksworth.

Training

MyTestTrack.com's site at Wirksworth acts also as a training facility for trackworker and track safety induction courses.

With single, double and multiple track sections, trainees can be introduced to a railway environment in a controlled manner, while classroom facilities with broadband are available. With the line disconnected from the national network, the Test Site allows members of your staff to try out or experiment with vehicles on track without the requirement to hold a Sentinel PTS card. Our own Site Specific Safety Briefing and dedicated Pilotman are provided to help ensure your safety.



The site contains a purpose-built training siding which contains a wide variety of rail types, sleepers (wooden, concrete and steel) and fastenings. This siding is of great interest to some clients who are developing formation/ballast examination techniques, allowing them to add nearly all existing sleeper/fixing combinations to their databases.

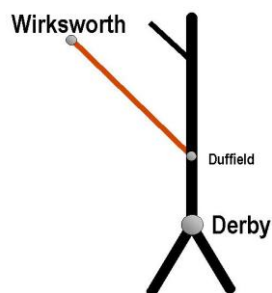
Easy to do Business

Our attitude is *'make it happen', not 'make it go away'*. Inspired by the experience of one customer who tried for several weeks to gain access for testing to a mothballed line on the national network, facilities at Wirksworth can be booked by telephone, where you can speak to a member of our management team who will discuss your exact requirements. Requests can be accepted at short notice and a call to us on 01629 821828 is your first step. We can 'book you in' when you call and our dedicated team will handle all aspects of your visit, whether it is for experimental work, testing or the full 1530 test by the Vehicle Acceptance Board.



The site at Wirksworth includes vehicle storage, a basic maintenance facility and crew accommodation. The Road Rail Access Point is large enough to accommodate main line locomotives arriving by low loader. Discretion is assured and private access and out-of-sight testing can be arranged upon request.

The Best Location



MyTestTrack.com is based just five miles from Derby on the Midland Main Line. Our line runs from Duffield to Wirksworth in the Derbyshire Dales and is easily accessible by rail, road or air. Change at Derby for InterCity services or take the A6 northbound. Wirksworth is equidistant to Nottingham East Midlands and Manchester Airports, nestling in the foothills of the Peak District.

The Best Deal

MyTestTrack.com provides the best deal as well as the best facilities. We appreciate the budgetary pressures experienced by contractors and operators alike and will offer a deal that is competitive and flexible. We will provide you with a clear quotation and a no-frills price.

Who We Are

MyTestTrack.com is a venture by WyvernRail plc. WyvernRail is reopening the Ecclesbourne Valley Railway between Duffield and Wirksworth and is locally owned and managed with an attitude to make things work.

Contact MyTestTrack.com

We are easy to contact and will respond to your requirements quickly and efficiently. We also understand you will wish to discuss specific aspects of your requirements with a decision maker.

Our dedicated number - **01629 821828** - will put you in contact with Martin Miller or Phil Tarry who will be with you throughout your time with us. This number forwards to either of their mobile phones when they are out of office ensuring seven day per week availability.

Confirmation of your requirements can be emailed to wirksworth_station@wyvernrail.co.uk.

